

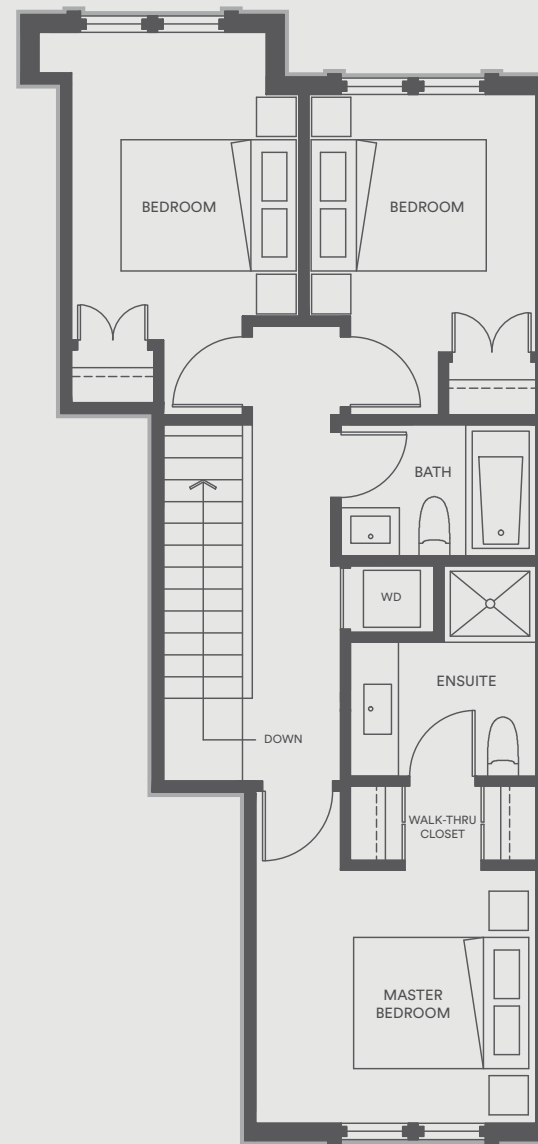
C2

2132 ST JOHNS STREET

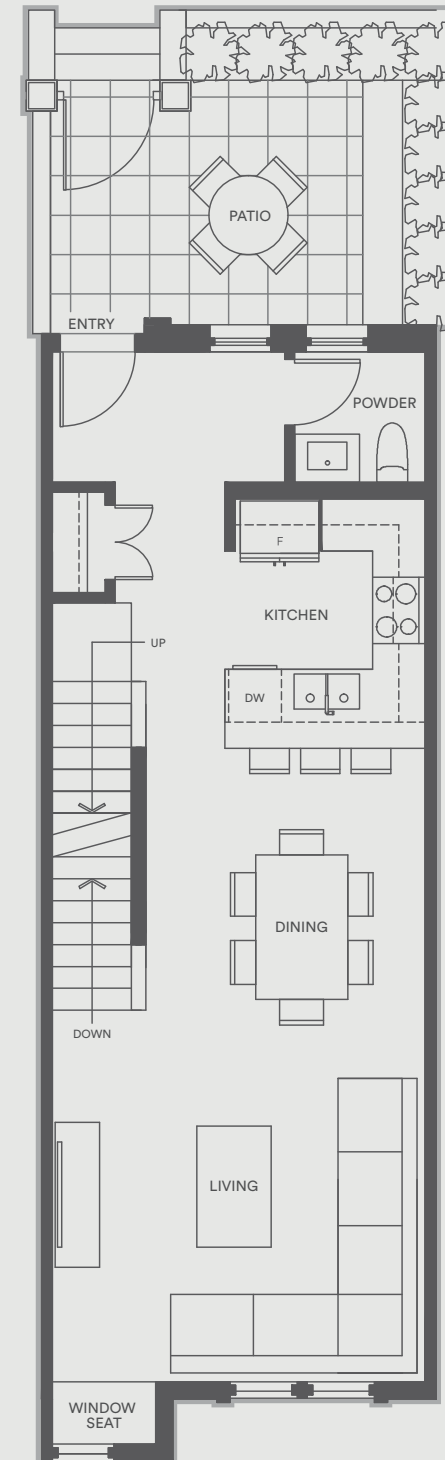
Living 1290 sqft
Garage 537 sqft
Outdoor 116 sqft

Total 1943 sqft

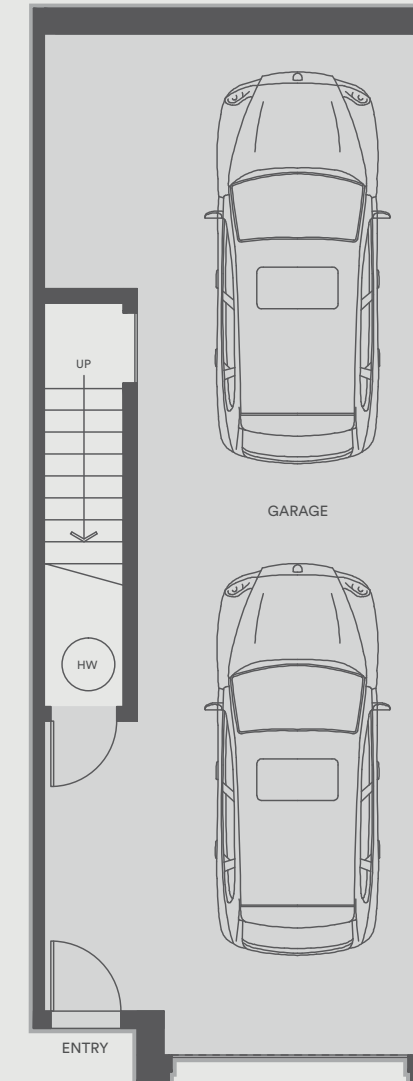
3 Bedroom + 2 Bathroom



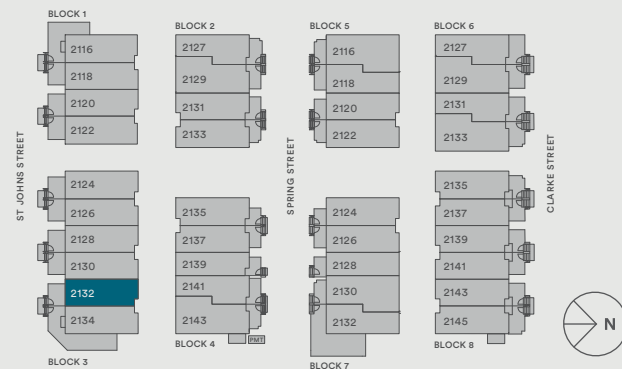
UPPER



MAIN



LOWER



Actual suite plans may have variations from or be shown as mirror image of the plan shown. All sizes are approximate. The Developer reserves the right to make changes to the floor plans, Bold360 specifications, ceiling heights, number of floors, number of units, project design, appliances, brands, colours, specifications, features and finishes without notice, as deemed necessary. The Developer reserves the right to add, delete or modify stairs within the suite. This is not an offering for sale. Any such offering can only be made with the applicable offer to purchase and agreement of sale, and disclosure statement. E.&O.E.